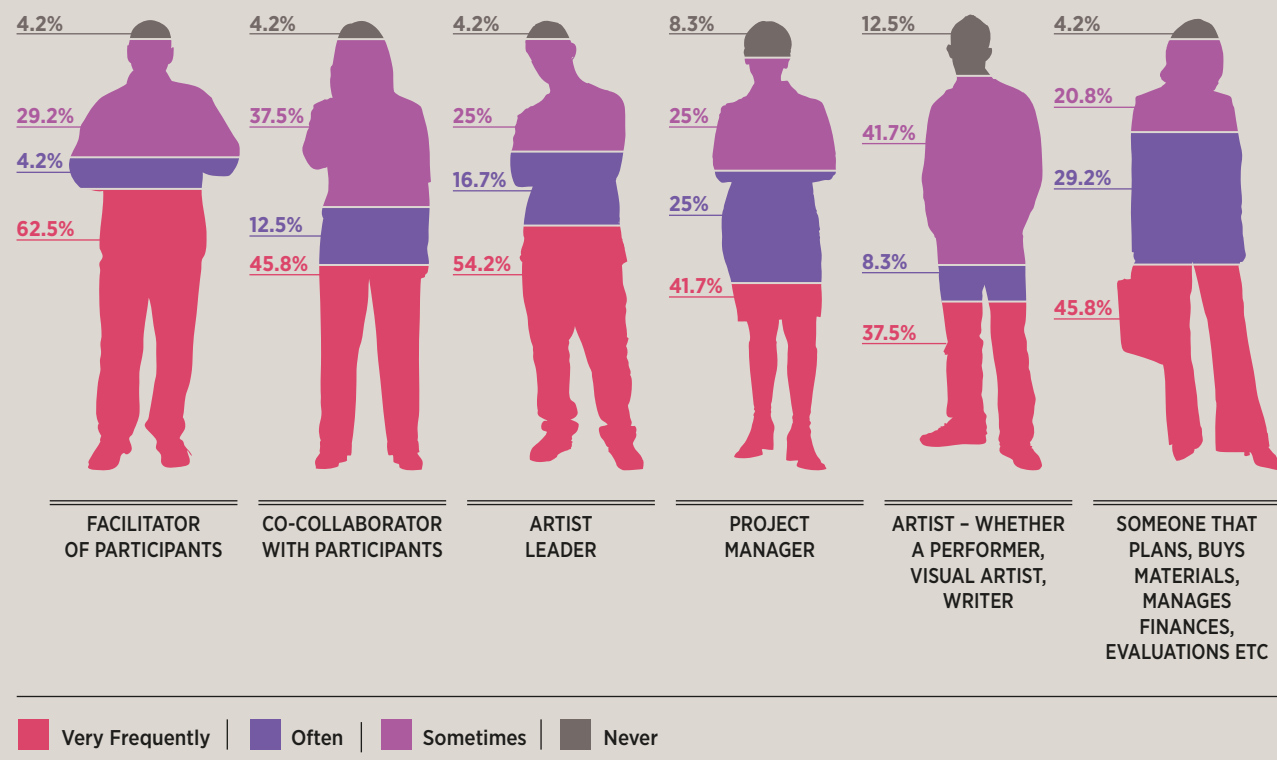
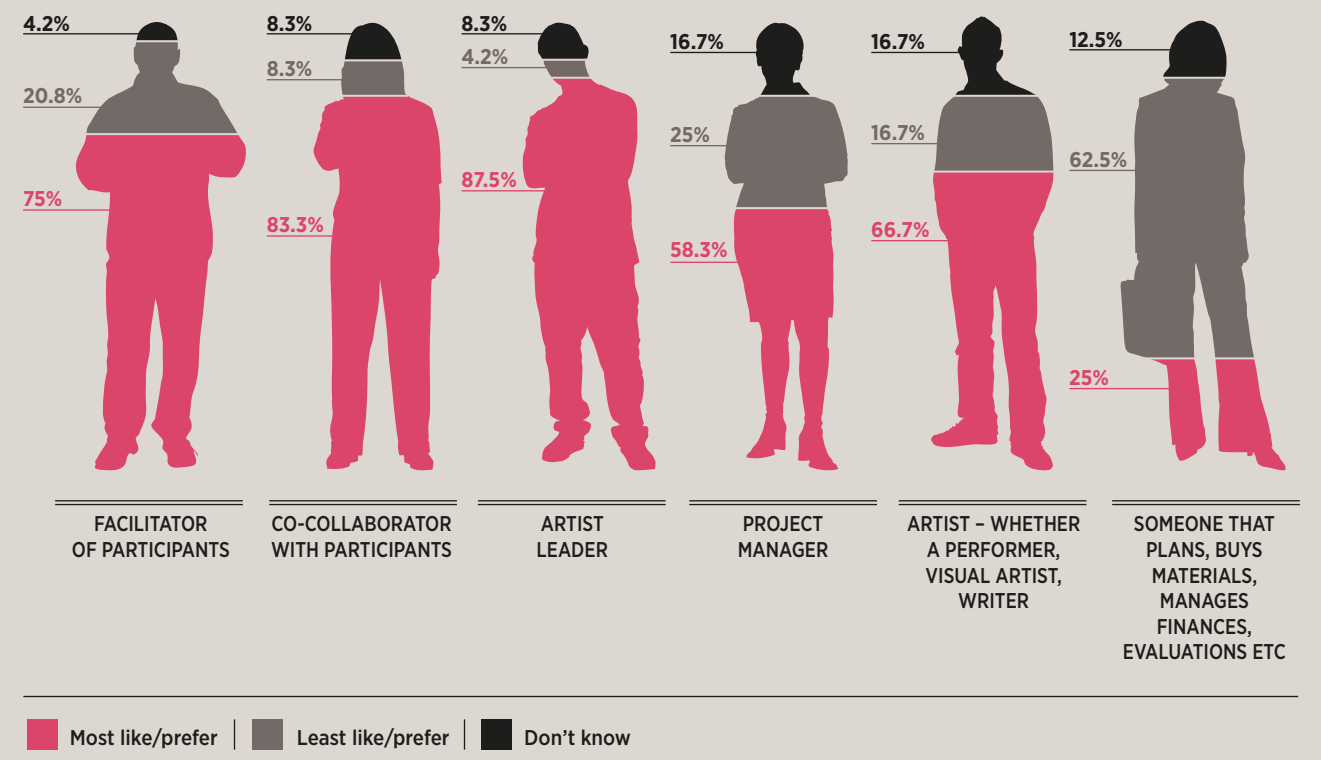


ROLES IN PARTICIPATORY SETTINGS



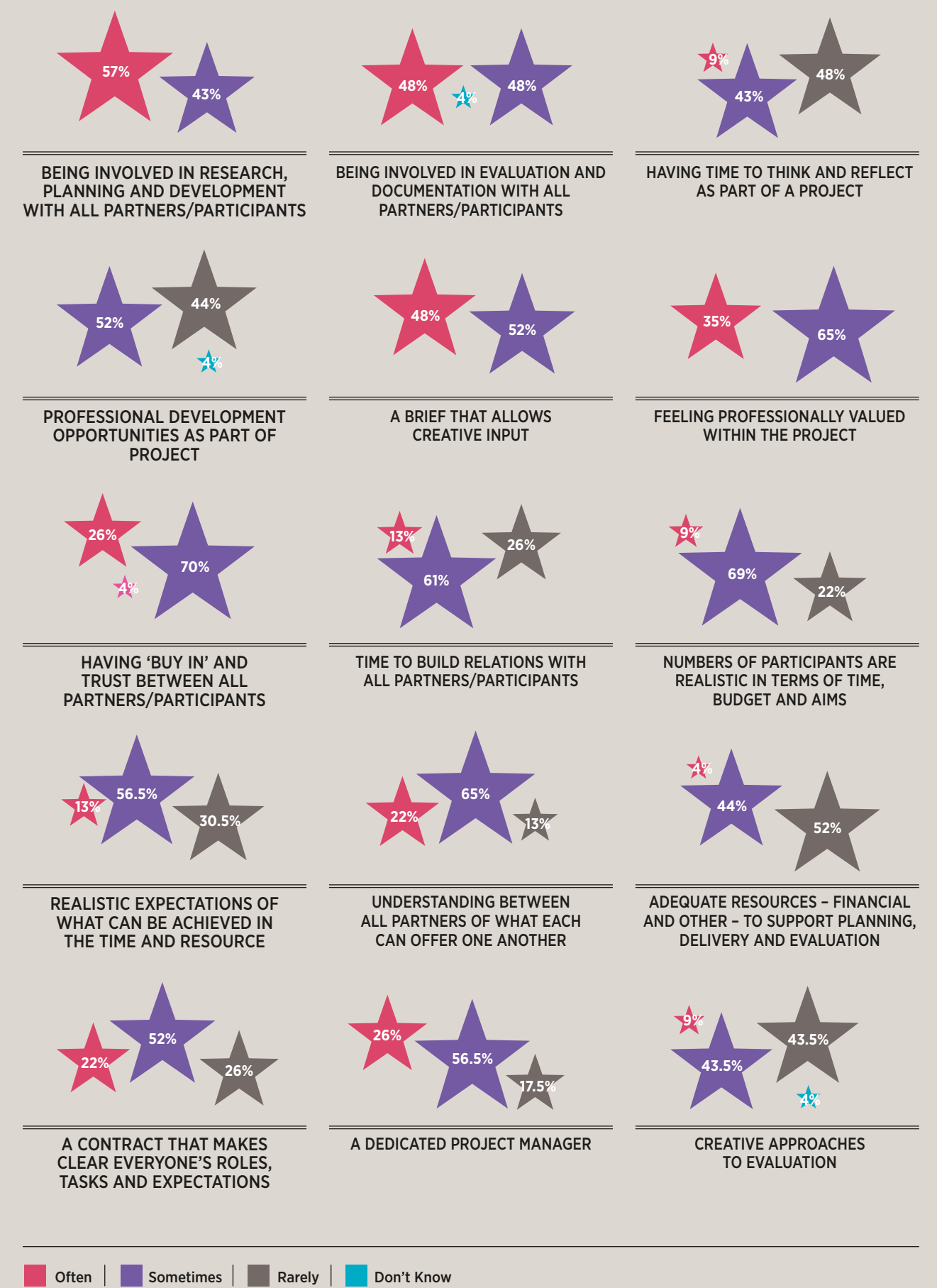
PREFERRED ROLES IN PARTICIPATORY SETTINGS



QUALITY FACTORS SUGGESTED IMPORTANCE



QUALITY FACTORS HOW OFTEN THEY HAPPEN



Information sourced from *Learning from ArtWorks Scotland Peer to Peer Networks* Research Report by Dr Fiona Dean

This poster shows what artists in Scotland told us about their work in participatory settings, including the roles they play and factors for quality. The information has been selected from two strands of ArtWorks Scotland research undertaken in 2012, the *Skillset Research and Gap Analysis for Artists Working in Participatory Settings* stage 2 report, by Consilium Research & Consultancy Ltd and the *Learning from ArtWorks Scotland Peer to Peer Networks* interim research report, by Dr Fiona Dean. To find out more about ArtWorks Scotland, and to read the full research reports (published December 2012), go to www.creativescotland.com/artworks

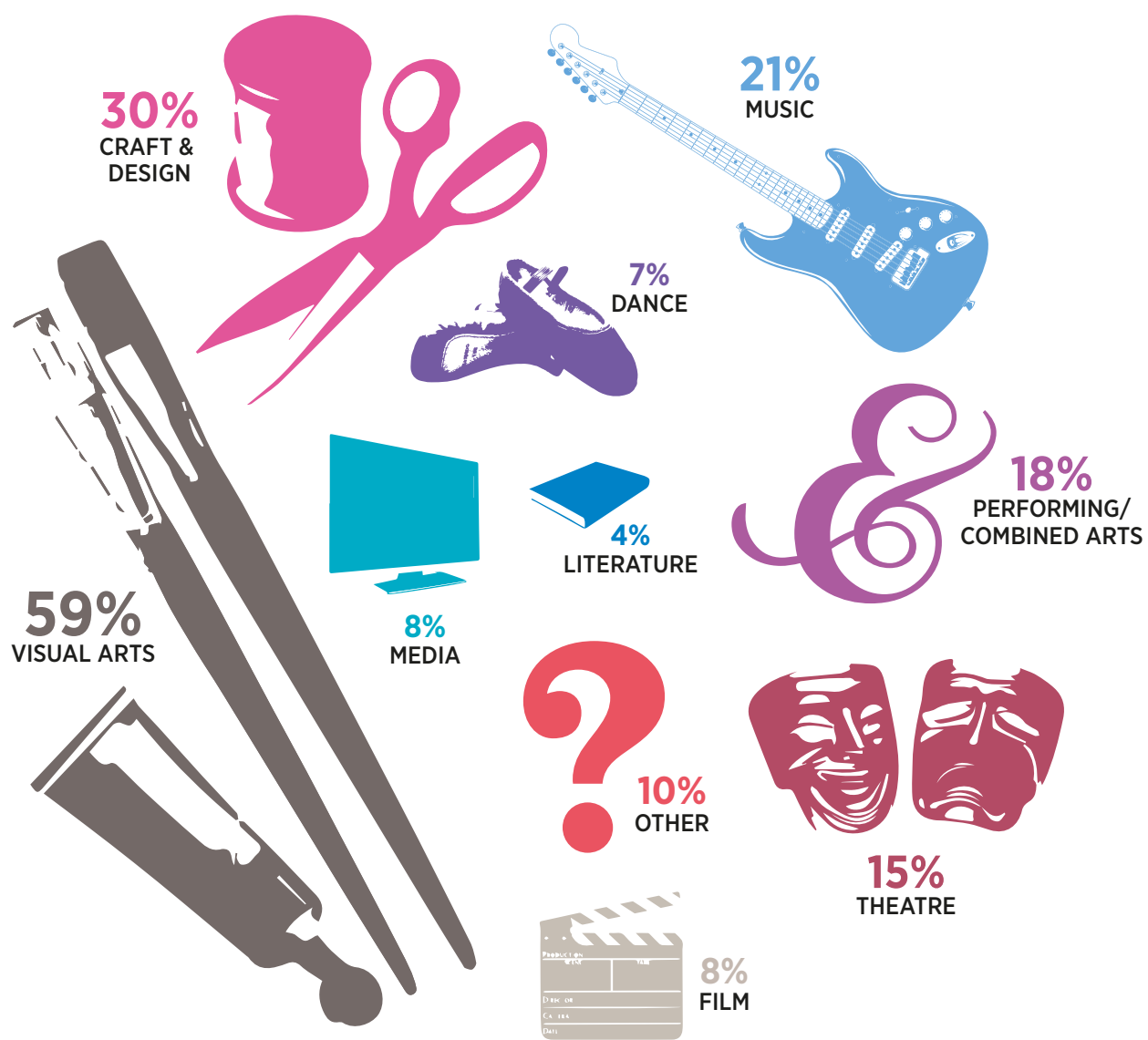
ArtWorks aims to support the initial training and continuous professional development of artists working in participatory settings. This will enhance the quality of people's engagement in arts-led activity and the arts, and create a more professional and confident sector whose work is valued and seen as important.

ArtWorks: Developing Practice in Participatory Settings is a Paul Hamlyn Foundation Special Initiative with support and funding from the Arts and Humanities Research Council, Creativity Culture & Education (supported by Arts Council England) and the Cultural Leadership Programme. ArtWorks Scotland is match funded and led by Creative Scotland.

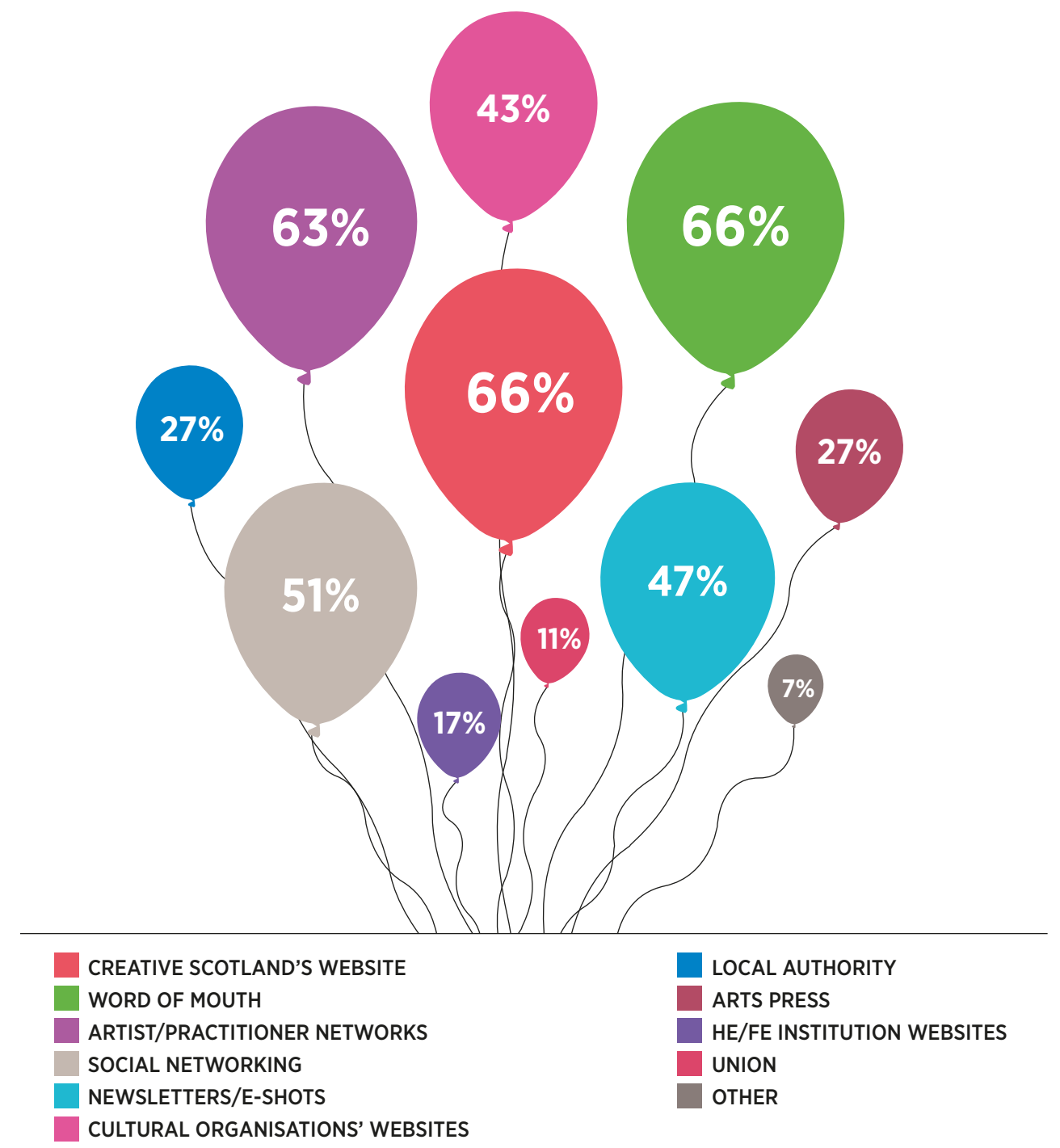


ARTISTS IN PARTICIPATORY SETTINGS...
8 OUT OF 10 PREFER...

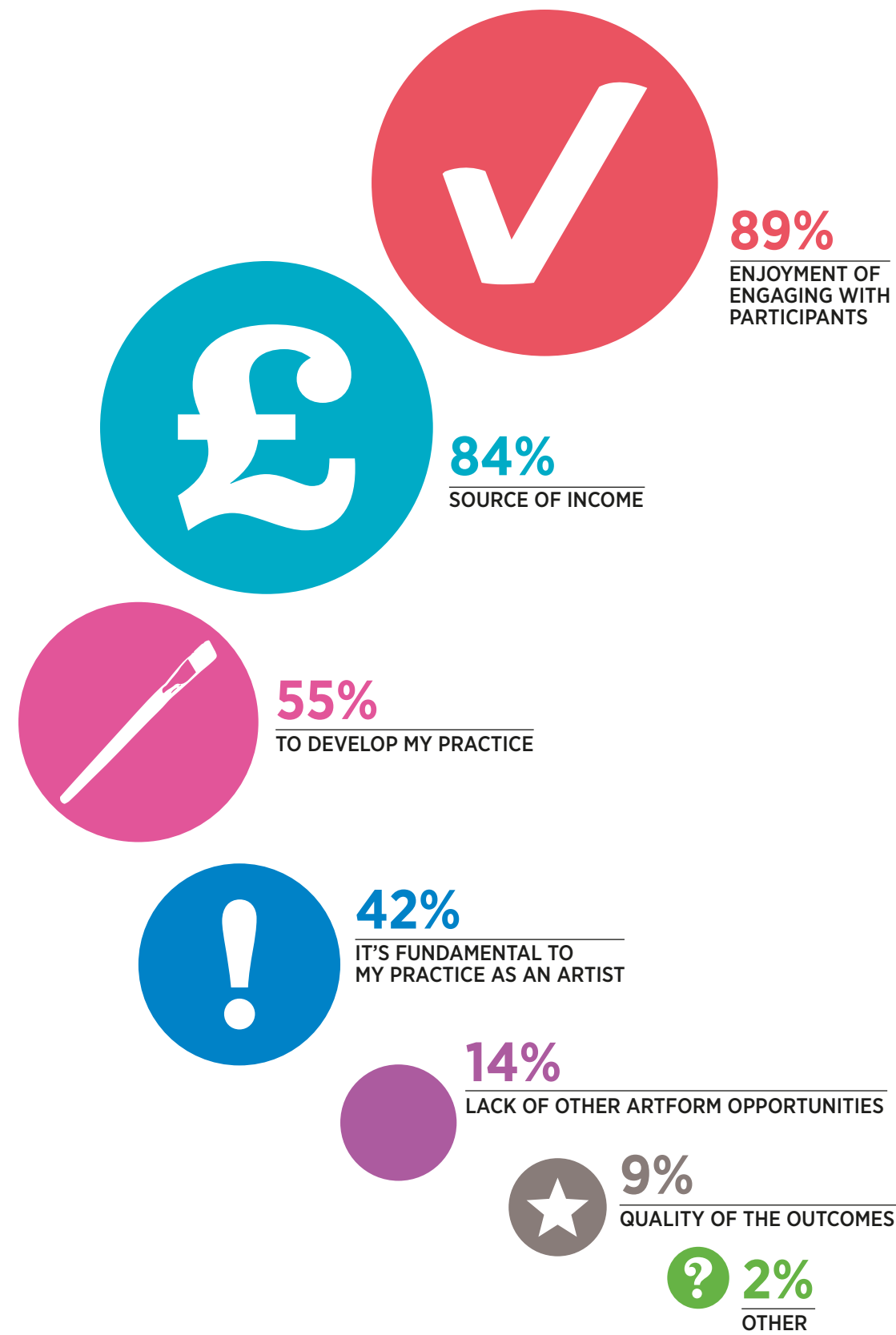
ARTFORMS WHICH RESPONDING ARTISTS WORK IN



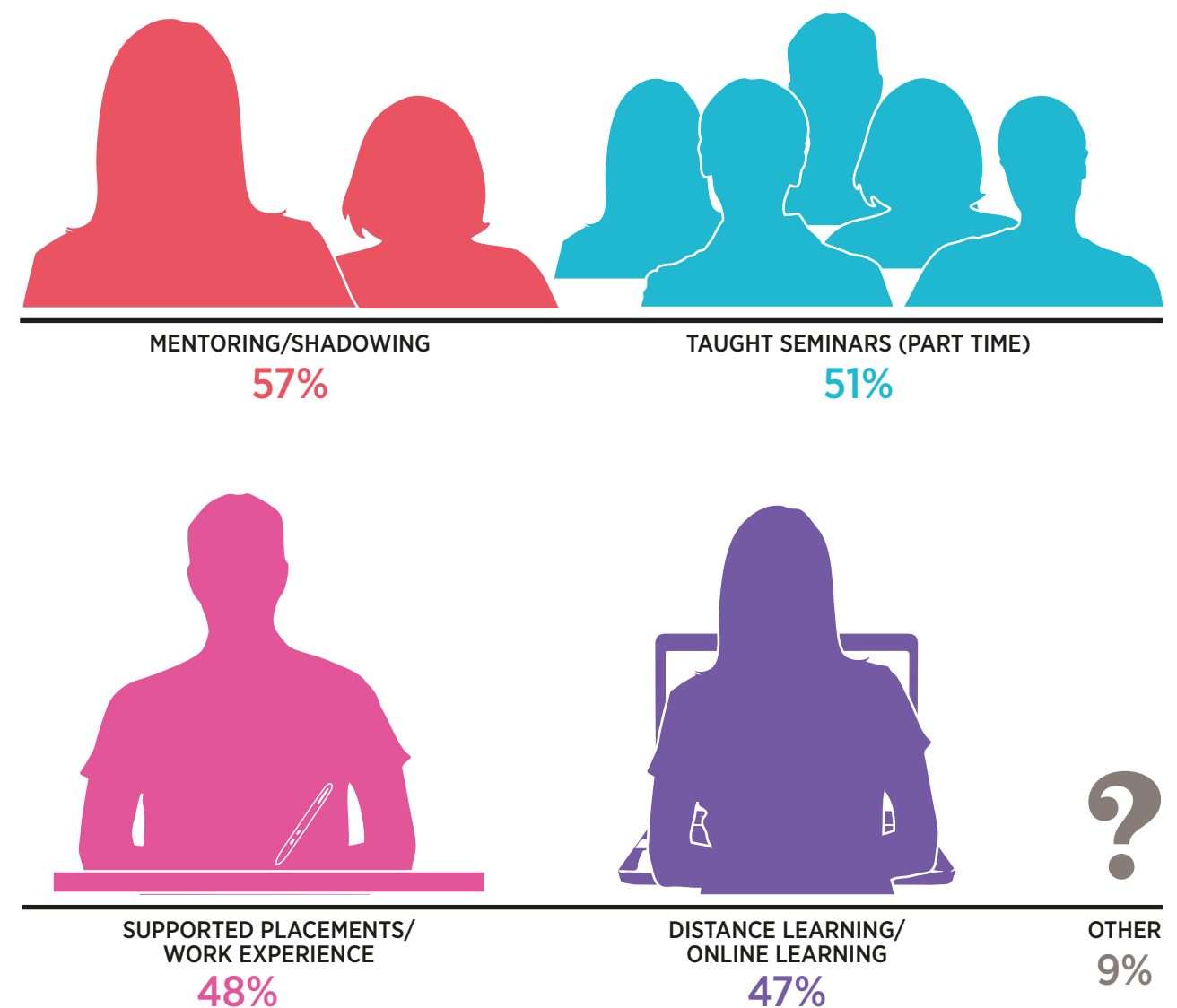
INFORMATION SOURCES FOR PROFESSIONAL DEVELOPMENT OPPORTUNITIES



REASON FOR WORKING AS AN ARTIST IN PARTICIPATORY SETTINGS



PREFERRED FORMAT OF ARTIST TRAINING



PARTICIPATORY SETTINGS WORKED IN BY ARTISTS

